



pennsylvania
DEPARTMENT OF ENVIRONMENTAL PROTECTION



Bureau of Waterways Engineering and Wetlands

DGS 184-22
Meadow Brook
Flood Control Project, Phase 3

Meadow Brook
City of Scranton
Lackawanna County

June 26, 2024

Project Partners

- Department of General Services (DGS)
 - * Funding Agency
 - * Contract Administrator
- Department of Environmental Protection (DEP)
 - * Program Agency (the funds user)
 - * Issue DEP Permit
- Reilly Associates
 - * Design Professional
- City of Scranton
 - * Project Sponsor

Responsibilities of Project Partners

■ DGS

- * Request Budget Office to release design funds
- * Select Design Engineer (Reilly)
- * Conduct legal review and approval of all land acquisition and conveyance documents
- * Review and approve construction plans and specifications
- * Request Budget Office to release construction funds
- * Bid, award, and administer construction contract

Responsibilities (cont.)

■ DEP

- * Provide engineering review & guidance to Reilly
- * Issue DEP permits
- * Review City's land acquisition documents
- * Assist City in coordinating major utility relocations
- * Provide Construction Inspection Services during construction
- * Transfer Permit to City after project completion
- * Provide LOMR application information to City for FIS map revision
- * Issue Operation and Maintenance Manual to City
- * Conduct Annual Operation and Maintenance Inspections

Responsibilities (cont.)

■ Reilly Associates

- * Design project, develop contract drawings and specifications, and obtain all permits and approvals
- * Assist City in coordinating major utility relocations
- * Develop land acquisition documents for the City
- * Provide Engineering and Construction Management Services during construction

Responsibilities (cont.)

■ City of Scranton

- * Execute Sponsorship Agreement with DEP
- * Fund City's project related costs
- * Obtain easements for construction and maintenance
(Obtain signatures and record deeds)
- * Coordinate and complete Sponsor Adjustments
- * Provide DEP with \$42,000 Performance Security.
Establish a Maintenance Escrow Account and Deposit
\$14,000 annually into the account.
- * Operate and Maintain the completed Project
- * Participate in annual maintenance inspections

Project Authorization & Funding

- Flood control projects are authorized and funded by the Commonwealth of Pennsylvania. No Federal Funding. Project Sponsor also contributes.
- Total Construction Estimate: \$12,100,000

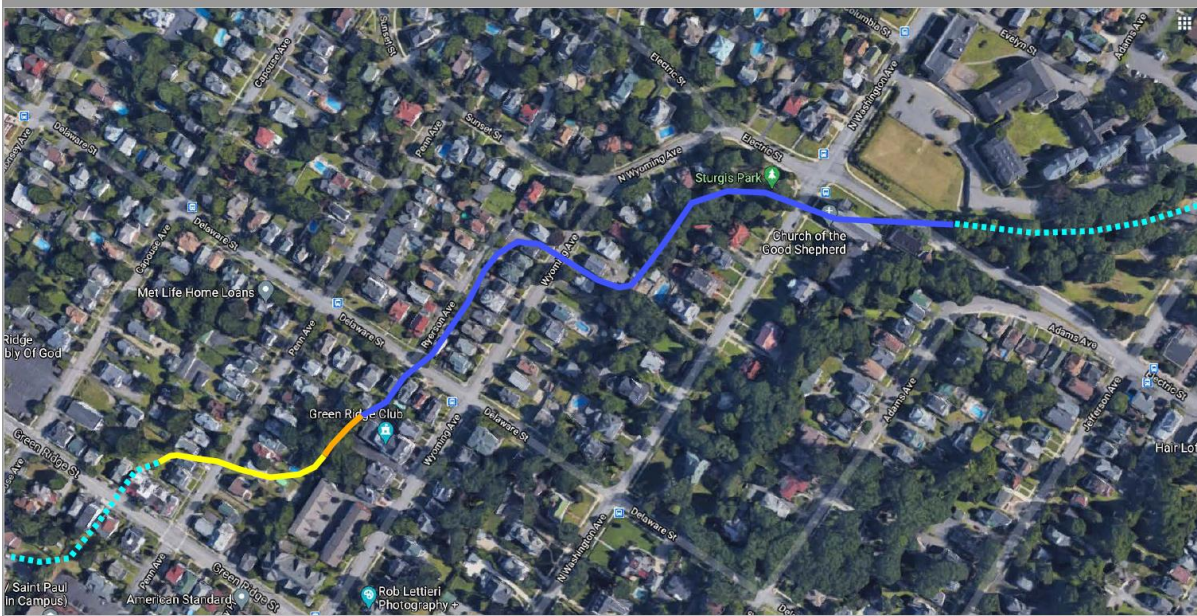
Design Completion & Construction Timeline

- Interim Construction Document Phase
 - * July 2024
- Construction Documents Phase
 - * August 2024
- Right-of-Way Acquisition
 - * March 2025
- Construction Contract Bid Advertisement
 - * June 2025
- Project Construction Phase
 - * November 2025 through May 2027

Definitions

- 1% Annual Storm: A storm event that has a 1% chance of occurring in any given year.
- Permanent Easement: Permanent easement grants right of ingress, egress, and regress to construct and maintain project (10-15 feet beyond edge of culvert or outside edge of floodwall).
- Temporary Easement: Temporary right-of-way used during construction solely for the purpose of constructing project. Reverts back to property owner when construction is complete.
- Sponsor Adjustments: The relocation and/or removal of any utility line, structure, shed, playground, fence, pool, etc., that will interfere with construction of the project (City cost).

Project Details



- Trash Rack
- 7' Reinforced Concrete Pipe
- 7'W x 7'H Concrete U-Channel
- 7'W x 7' H Concrete Box Culvert

Total Project Length 2,400 Feet

Project Details

Existing Culvert Photos



Existing culvert under Electric Street

Project Details

Existing Culvert Photos



Existing culvert under Washington Avenue/Sturgis Park

Project Details

Existing Culvert Photos



Existing culvert repair near Ryerson Avenue

Project Details

Existing Culvert Photos



Existing culvert repair near Delaware Street

Project Details

Existing Culvert Photos



Existing culvert near Delaware Street

Project Details

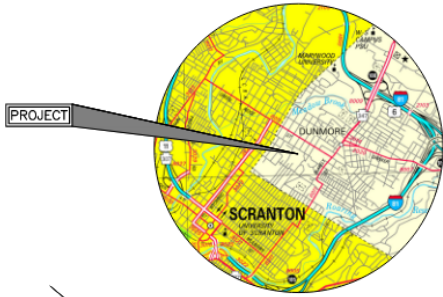
Existing Culvert Photos



Existing culvert near Delaware Street

Project Features

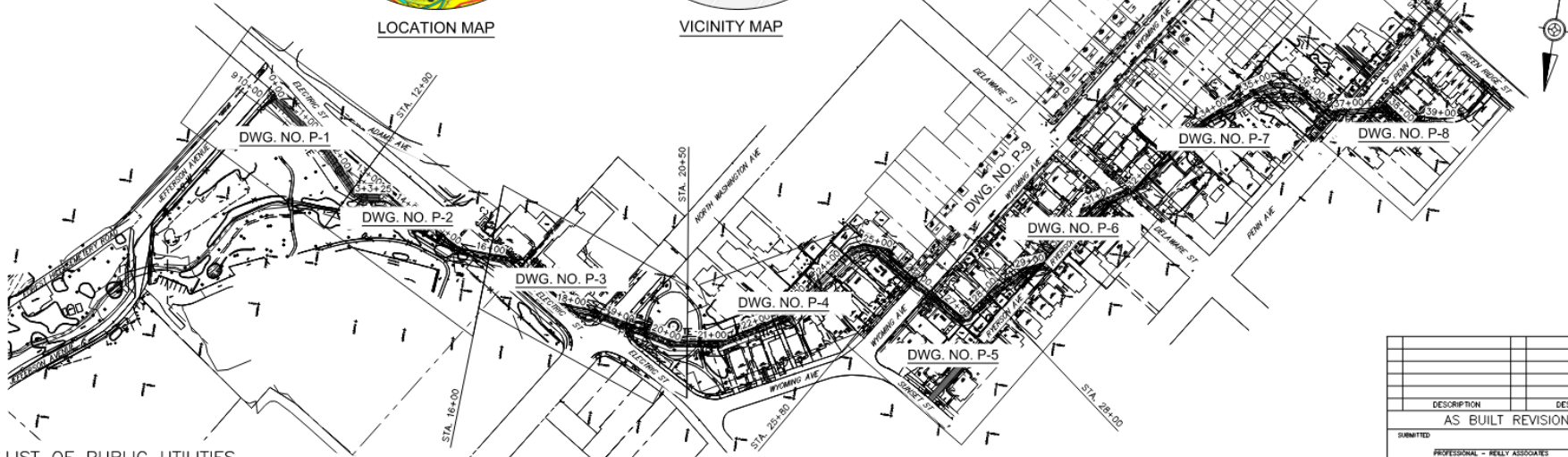
- Begin project upstream of Electric Street in Dunmore Borough
- Proposed Trash Rack at culvert entrance
- 7-foot diameter Concrete Pipe approximately 1780 feet
- 7-foot x 7-foot Concrete U-channel approximately 150 feet long
- 7-foot x 7-foot Box Culvert approximately 430 feet long
- Tie into where the DGS 184-22 Phase 2 construction ended (near Green Ridge Street and Penn Avenue)
- Total Project Length 2,400 Feet



LOCATION MAP



VICINITY MAP



GENERAL PLAN

SCALE: 0 100 200 FEET

LIST OF PUBLIC UTILITIES

COMPANY: COMCAST
ADDRESS: 1 COMCAST WAY
DURVEA, PA. 18642
CONTACT: JOEL SEDESKI
PHONE: 570-760-1244

COMPANY: PPL ELECTRIC UTILITIES
ADDRESS: 600 LARCH STREET
SCRANTON, PA. 18509-2899
CONTACT: MR. WILLIAM FARBER
PHONE: 570-348-1539

COMPANY: FRONTIER COMMUNICATIONS OF PA
ADDRESS: 300 Lord Street
Wilkes-Barre, PA. 18702
CONTACT: Mr. Michael Navich
PHONE: 570-266-4002

COMPANY: PENNSYLVANIA AMERICAN WATER
ADDRESS: 2699 STAFFORD AVE
SCRANTON, PA. 18507
CONTACT: MARK BALOH
EMAIL: mark.baloh@pawater.com
PHONE: 570-696-7501 Ext. 1242

COMPANY: UGI PENN NATURAL GAS
ADDRESS: 1 UGI CENTER
WILKES BARRE, PA. 18701
CONTACT: EDWARD DUNLAP
PHONE: 570-829-8773

COMPANY: PENNSYLVANIA AMERICAN WATER/WASTEWATER DIVISION
ADDRESS: 2500 SANITARY DRIVE
SCRANTON, PA. 18505
CONTACT: JEREMY HULL
PHONE: 570-614-3333

COMPANY: VERIZON PENNSYLVANIA LLC
ADDRESS: 222 S. MAIN STREET-6TH FLOOR
WILKES BARRE, PA 18701
CONTACT: CRAIG M. SMITH
EMAIL: craig.m.smith@verizon.com
PHONE: 570-826-4269



CALL BEFORE YOU DIG
BEFORE YOU DIG ANYWHERE IN PENNSYLVANIA
CALL 1-800-242-1776
PA ACT 287 OF 1974 REQUIRES THREE
WORKING DAYS NOTICE TO UTILITIES
BEFORE YOU EXCAVATE, DRILL OR BLAST
PENNSYLVANIA ONE CALL SYSTEM INC.
PA ONE CALL SYSTEM SERIAL NUMBER:
2021148054, 2021148055, 2021148056,
20211480713, 20211480744, 20211480757

LEGEND:

○	Storm	△	Inverse Point
○	Tree	—	Water Line
⊙	Storm Manhole	—	Gas Line
⊙	Sanitary Manhole	—	Telephone Line
⊙	Telephone Manhole	—	Electric Line
○	Manhole	—	R/W Line
○	Light	—	Private Line
○	Pole	—	Utility Box
○	Gas Valve	—	Storm Pipe
○	Water Valve	—	Storm
○	New Drain	—	Man Contour
○	Crack Drain	—	Man Contour
○	Hydrant	—	Man Contour
○	Signal Pole	—	Man Contour

HYDRAULIC DATA

D.A.=0.58 SQUARE FEET
9 DESIGN-425 CFS
FREEBOARD (CHANNEL WALLS) = 1.0 FEET (MIN.)

NOTES:

1. THE TOPOGRAPHY SHOWN ON THE DRAWINGS IS BASED ON A SURVEY CONDUCTED BY LABELLA ASSOC. IN 2019.
2. ALL ELEVATIONS ARE BASED ON N.G.V.D. ELEVATIONS OF FEATURES ARE TO BE TAKEN FROM BENCHMARKS (B.M.) LISTED ON THE DRAWINGS.
3. EXISTING CONTOURS AND EXISTING GROUND LINES ARE INTENDED TO SHOW THE GENERAL GROUND CONFIGURATION.
4. DATA CONCERNING UTILITIES HAS BEEN OBTAINED FROM AVAILABLE INFORMATION, ACCURACY OR COMPLETENESS OF THIS DATA IS NOT GUARANTEED. SEE UTILITY LISTINGS ON THIS DRAWING.
5. THE CONTRACTOR'S ATTENTION IS DRAWN TO THE "SPONSOR ADJUSTMENTS" TABLES. THE ITEMS LISTED ARE NOT PART OF THE CONTRACT. SEE SPECIAL REQUIREMENT - SPONSOR'S ADJUSTMENTS.
6. RIGHT-OF-WAY ACQUISITION DRAWINGS, WHICH SHOW MORE DETAILED DIMENSIONS FOR RIGHT-OF-WAY AND CONTRACTOR'S WORKING AREA LIMITS ARE ON FILE AT THE OFFICE OF WATER MANAGEMENT, DEPARTMENT OF ENVIRONMENTAL PROTECTION, HARRISBURG, PENNSYLVANIA. THESE DRAWINGS WILL BE FURNISHED TO THE SUCCESSOR OWNER.
7. MINOR ADJUSTMENTS IN ALIGNMENT AND GRADE MAY BE MADE TO FACILITATE CONSTRUCTION WITH THE APPROVAL OF THE DEPARTMENT.
8. CLEARING AND GRUBBING IS NOT SHOWN ON THE DRAWINGS BUT IT SHALL EXTEND TO THE PERMANENT EASEMENT LINE UNLESS DIRECTED OTHERWISE BY THE DEPARTMENT.
9. INDISCERNIBLE CUTTING TREES WILL NOT BE PERMITTED. APPROVAL OF THE DEPARTMENT WILL BE REQUIRED PRIOR TO CUTTING ANY TREES. SEE TECHNICAL SPECIFICATION 8 - CLEARING AND GRUBBING.
10. THE CONTRACTOR SHALL FILL AND/OR GRADE AREAS ADJACENT TO THE NEW CONSTRUCTION FOR POSITIVE DRAINAGE AS DIRECTED BY THE DEPARTMENT.
11. ALL SEEDING SHALL BE PERMANENT SEEDING UNLESS OTHERWISE NOTED.
12. SPILL AND/OR BORROW AREAS ARE TO BE SECURED BY THE CONTRACTOR AT HIS COST. SEE GENERAL REQUIREMENT - SPECIAL PROVISION - SECURING BORROW AND/OR SPILL AREAS.
13. CAST-IN-PLACE CONCRETE NOTES ARE SHOWN ON DRAWING NO. D-5

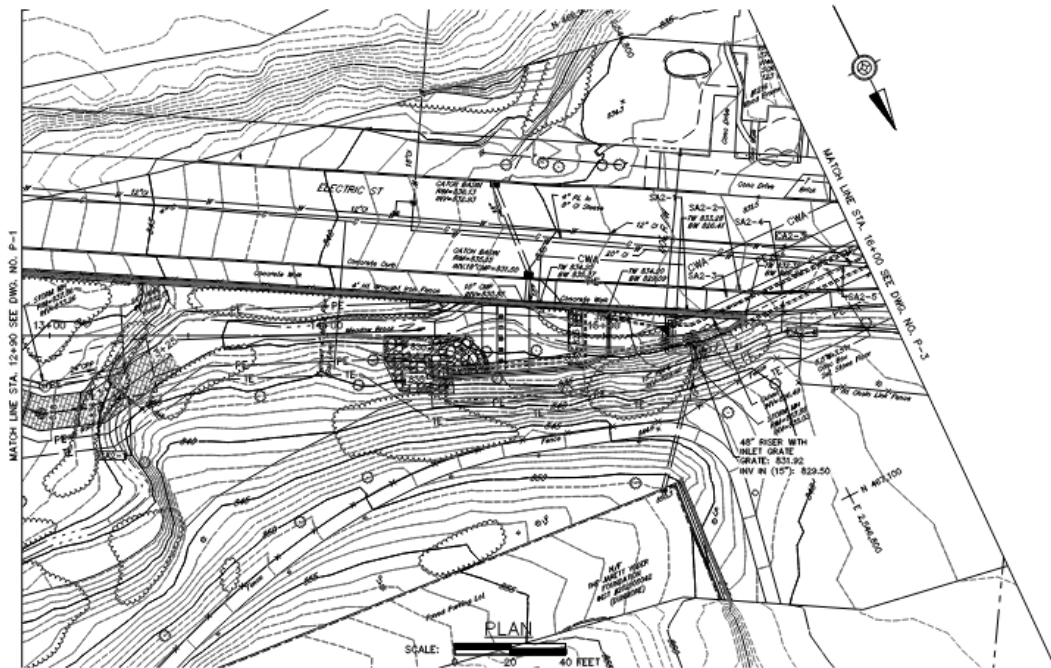
DEFINITIONS:

DEPARTMENT: THE DEPARTMENT OF GENERAL SERVICES OF THE COMMONWEALTH OF PENNSYLVANIA, ALSO KNOWN AS "DGS", OR ANY AUTHORIZED REPRESENTATIVE OR ESCUPEE, AND IS REFERRED THROUGHOUT THE CONTRACT DOCUMENTS AS SINGULAR IN NUMBER.

CLIENT AGENCY: THE COMMONWEALTH EMPLOYEE OF THE BUREAU OF WATERWAYS ENGINEERING AND WELFARE IN THE DEPARTMENT OF ENVIRONMENTAL PROTECTION AT THE CENTRAL OFFICE IN HARRISBURG, PENNSYLVANIA.

ALL DIMENSIONS AND EXISTING CONDITIONS SHALL BE CHECKED AND VERIFIED BY CONTRACTOR AT THE SITE.

DESCRIPTION	DESCRIPTION
AS BUILT REVISIONS	
SUBMITTED	
APPROVED	
Professional's Signature Date	
REILLY ASSOCIATES CONSULTING ENGINEERS 49 SOUTH MAIN STREET, SUITE 200 PITTSBURGH, PENNSYLVANIA 15260	
COMMONWEALTH OF PENNSYLVANIA DEPARTMENT OF GENERAL SERVICES HARRISBURG, PENNSYLVANIA	
PROJECT NO. DGS 0184-0022 PHASE 3	
MEADOW BROOK FLOOD CONTROL CITY OF SCRANTON LACKAWANNA COUNTY, PENNSYLVANIA	
GENERAL PLAN	
DRAWN BY: CM	DATE: 05/31/24
CHECKED BY: MAM	SCALE: AS SHOWN
DRAWING NO.	GP-1

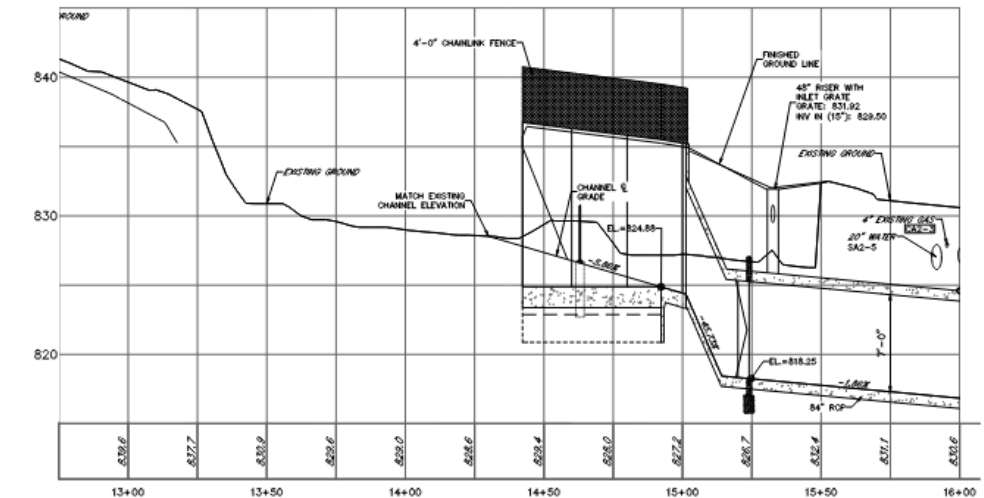


CURVE DATA									
CURVE NO.	P.I. COORDINATES		Δ	D	R	T	L	P.C. STATION	P.T. STATION
	NORTH	EAST							
P.I. #1	467.0231	2,546.8248	25°-00'-00"						

SPONSOR ADJUSTMENTS				
NO.	DESCRIPTION	LOCATION		ADJUSTMENT REQUIRED
		± STATION	OFFSET	
SA2-1	FENCE	14+82 TO 16+00	LT./RT.	REMOVE AND REPLACE
SA2-2	ELECTRIC ST. CURBS	15+55 TO 15+86	LT./RT.	REPLACE
SA2-3	ELECTRIC ST. SIDEWALK	15+40 TO 15+84	LT./RT.	REPLACE
SA2-4	ELECTRIC ST. PAVING	15+58 TO 16+00	LT./RT.	REPLACE

CONTRACTOR ADJUSTMENTS				
NO.	DESCRIPTION	LOCATION		ADJUSTMENT REQUIRED
		± STATION	OFFSET	
CA2-1	TRASH RACK	13+20 TO 13+34	RT	REMOVE
CA2-2	DELETED			
CA2-3	4" GAS LINE	15+95	±	PROTECT AND SUPPORT
CA2-4	CONCRETE BOX CULVERT	15+43 TO 16+40	±	REMOVE

SPONSOR ADJUSTMENTS - BY OTHERS				
NO.	DESCRIPTION	LOCATION		ADJUSTMENT REQUIRED
		± STATION	OFFSET	
SA2-5	20" WATER LINE	15+82	±	RELOCATE

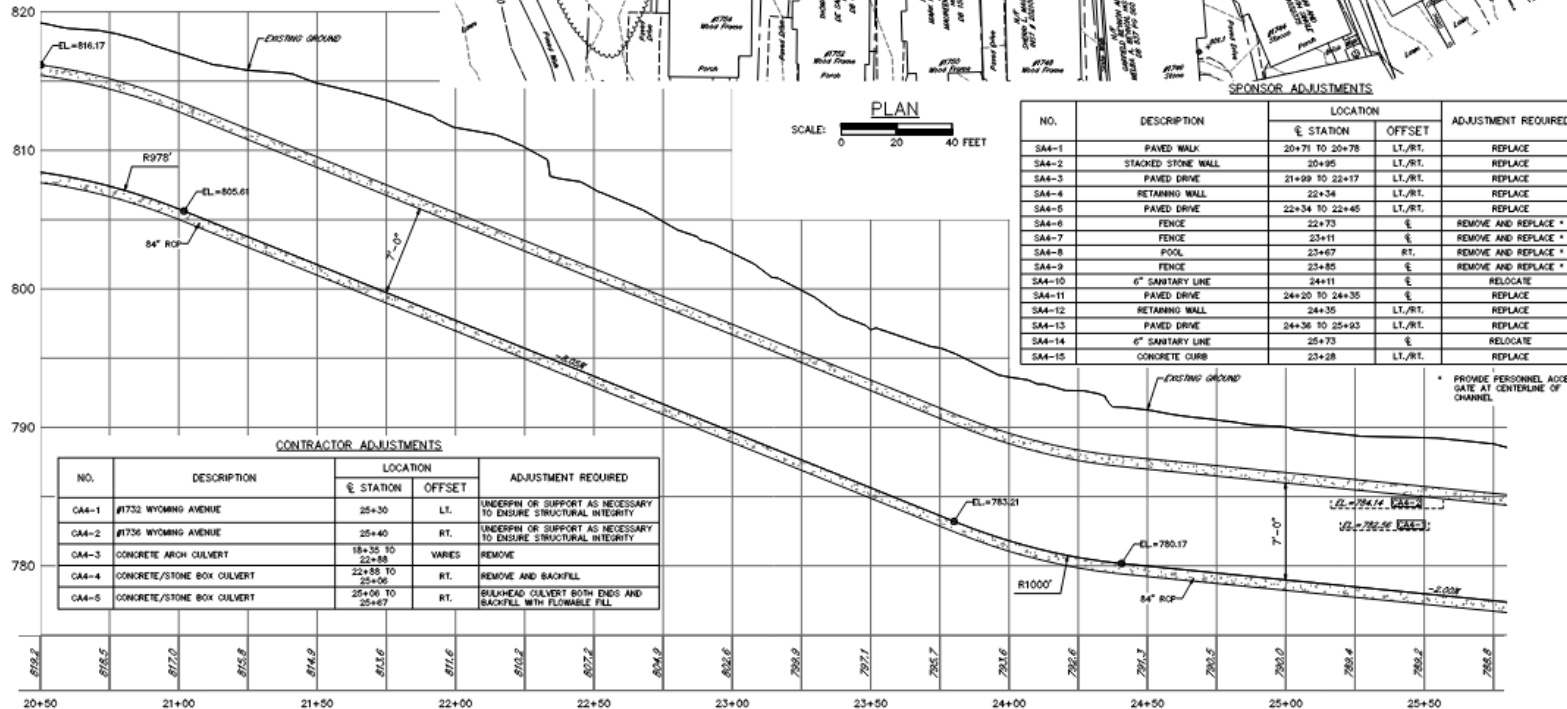
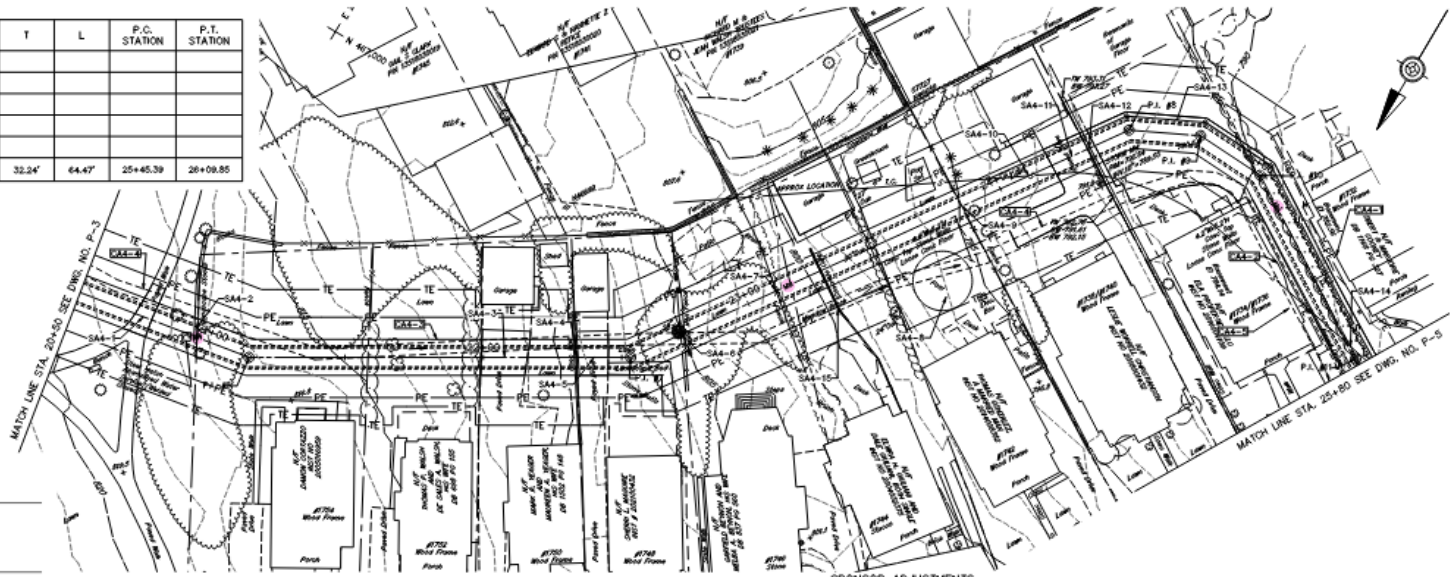


PROFILE
 HORIZONTAL: 0 20 40 FEET
 VERTICAL: 0 4 8 FEET

DESCRIPTION		DESCRIPTION
AS BUILT REVISIONS		
ISSUED:	PROFESSIONAL - REILLY ASSOCIATES	
APPROVED:	DIRECTOR - BUREAU OF WATERWAYS ENGINEERING AND WELFARE - EEP	
Professional's Signature Date		
REILLY ASSOCIATES CONSULTING ENGINEERS 49 SOUTH MAIN STREET, SUITE 200 PITTSBURGH, PENNSYLVANIA 15260		
COMMONWEALTH OF PENNSYLVANIA DEPARTMENT OF GENERAL SERVICES HARRISBURG, PENNSYLVANIA		
PROJECT NO. DGS 0184-0022 PHASE 3		
MEADOW BROOK FLOOD CONTROL CITY OF SCRANTON LACKAWANNA COUNTY, PENNSYLVANIA PLAN AND PROFILE STA. 12+90 TO STA. 16+00		
DRAWN BY: CM	DATE: 05/31/24	CHECKED BY: MAM
SCALE: AS SHOWN		GROUND NO. P-2

ALL DIMENSIONS AND EXISTING CONDITIONS SHALL BE CHECKED AND VERIFIED BY CONTRACTOR AT THE SITE.

CURVE NO.	P.I. COORDINATES		Δ	D	R	T	L	P.C. STATION	P.T. STATION
	NORTH	EAST							
P.I. #1	467,117.1	2,546,267.1	21°-00'-00"						
P.I. #7	467,047.1	2,546,148.3	24°-25'-47"						
P.I. #8	466,884.9	2,546,035.0	23°-00'-00"						
P.I. #9	466,873.5	2,546,011.7	23°-00'-00"						
P.I. #10	466,874.8	2,545,985.9	23°-00'-00"						
P.I. #11	466,814.3	2,545,922.5	3°-41'-37"	05°-43'-48"	1000.00'	32.24'	64.47'	25+45.39	26+08.85



SPONSOR ADJUSTMENTS

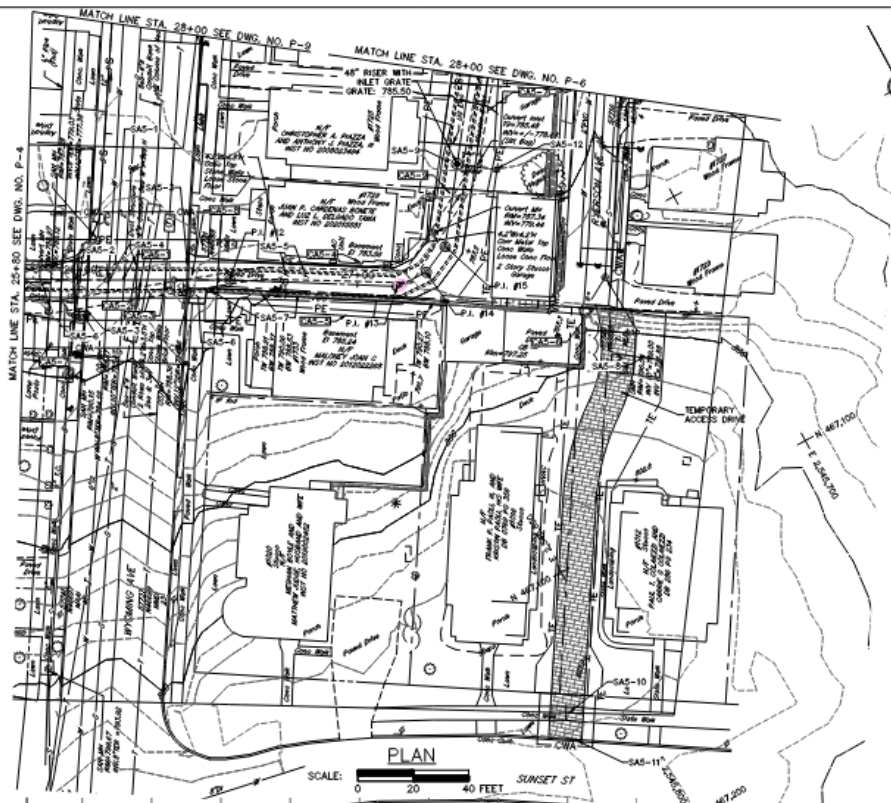
NO.	DESCRIPTION	LOCATION		ADJUSTMENT REQUIRED
		± STATION	OFFSET	
SA4-1	PAVED WALK	20+71 TO 20+78	LT./RT.	REPLACE
SA4-2	STACKED STONE WALL	20+85	LT./RT.	REPLACE
SA4-3	PAVED DRIVE	21+09 TO 22+17	LT./RT.	REPLACE
SA4-4	RETAINING WALL	22+34	LT./RT.	REPLACE
SA4-5	PAVED DRIVE	22+34 TO 22+45	LT./RT.	REPLACE
SA4-6	FENCE	22+73	±	REMOVE AND REPLACE *
SA4-7	FENCE	23+11	±	REMOVE AND REPLACE *
SA4-8	POOL	23+67	RT.	REMOVE AND REPLACE *
SA4-9	FENCE	23+85	±	REMOVE AND REPLACE *
SA4-10	6" SANITARY LINE	24+11	±	RELOCATE
SA4-11	PAVED DRIVE	24+20 TO 24+35	±	REPLACE
SA4-12	RETAINING WALL	24+35	LT./RT.	REPLACE
SA4-13	PAVED DRIVE	24+36 TO 25+03	LT./RT.	REPLACE
SA4-14	6" SANITARY LINE	25+73	±	RELOCATE
SA4-15	CONCRETE CURB	23+28	LT./RT.	REPLACE

CONTRACTOR ADJUSTMENTS

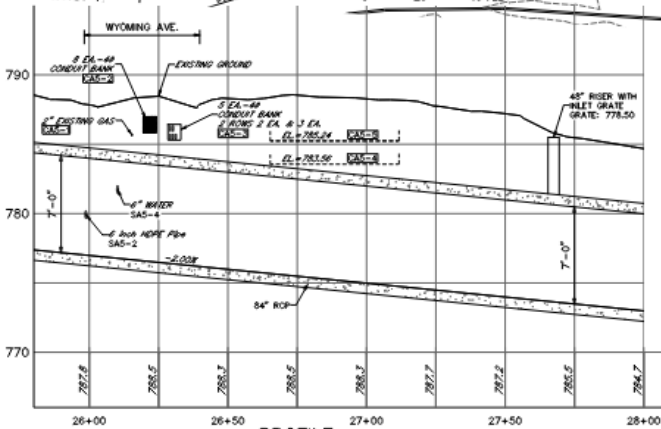
NO.	DESCRIPTION	LOCATION		ADJUSTMENT REQUIRED
		± STATION	OFFSET	
CA4-1	#1732 WYOMING AVENUE	25+30	LT.	UNDERPIN OR SUPPORT AS NECESSARY TO ENSURE STRUCTURAL INTEGRITY
CA4-2	#1736 WYOMING AVENUE	25+40	RT.	UNDERPIN OR SUPPORT AS NECESSARY TO ENSURE STRUCTURAL INTEGRITY
CA4-3	CONCRETE ARCH CULVERT	18+32 TO 22+88	VARIES	REMOVE
CA4-4	CONCRETE/STONE BOX CULVERT	22+58 TO 25+06	RT.	REMOVE AND BACKFILL
CA4-5	CONCRETE/STONE BOX CULVERT	25+06 TO 25+67	RT.	BULKHEAD CULVERT BOTH ENDS AND BACKFILL WITH FLOWABLE FILL

DESCRIPTION	DESCRIPTION
AS BUILT REVISIONS	
APPROVED	PROFESSIONAL - REILLY ASSOCIATES
DIRECTOR - BUREAU OF HIGHWAYS ENGINEERING AND NETWORKS - SE2P	
Professional's Signature	Date
REILLY ASSOCIATES CONSULTING ENGINEERS 49 SOUTH MAIN STREET, SUITE 200 PITTSBURGH, PENNSYLVANIA 15260	
COMMONWEALTH OF PENNSYLVANIA DEPARTMENT OF GENERAL SERVICES HARRISBURG, PENNSYLVANIA	
PROJECT NO. DGS 0184-0022 PHASE 3	
MEADOW BROOK FLOOD CONTROL CITY OF SCRANTON LACKAWANNA COUNTY, PENNSYLVANIA	
PLAN AND PROFILE STA. 20+50 TO STA. 25+80	
DRAWN BY: CM	DATE: 05/31/24
CHECKED BY: MAM	SCALE: AS SHOWN

ALL DIMENSIONS AND EXISTING CONDITIONS SHALL BE CHECKED AND VERIFIED BY CONTRACTOR AT THE SITE.



PLAN



PROFILE

HORIZONTAL: 1" = 20 FEET
 VERTICAL: 1" = 4 FEET

CURVE DATA

CURVE NO.	P.I. COORDINATES		Δ	D	R	T	L	P.C. STATION	P.T. STATION
	NORTH	EAST							
P.A. #12	466,950.7	2,545,855.2	2°-18'-18"	05°-43'-47"	1000.00'	20.12'	40.23'	26+33.88	26+74.11
P.A. #13	466,981.2	2,545,803.2	28°-00'-00"						
P.A. #14	466,981.7	2,545,791.5	28°-00'-00"						
P.A. #15	466,976.8	2,545,781.1	28°-00'-00"						

SPONSOR ADJUSTMENTS

NO.	DESCRIPTION	LOCATION		ADJUSTMENT REQUIRED
		± STATION	OFFSET	
SAS-1	WYOMING AVE. PAVING	25+93 TO 26+39	LT./RT.	REPLACE
SAS-3	WYOMING AVE. CURBS	25+93 TO 26+39	LT./RT.	REPLACE
SAS-5	PAVED DRIVE	26+39 TO 27+54	LT./RT.	REPLACE
SAS-6	WYOMING AVE. SIDEWALK	25+93 TO 26+39	LT./RT.	REPLACE
SAS-7	RETAINING WALL	26+46 TO 27+15	RT.	REPLACE
SAS-8	SWING SET	27+38	RT.	REMOVE AND REPLACE
SAS-9	PAVED DRIVE	27+25 TO 28+00	LT./RT.	REPLACE
SAS-10	CONCRETE SIDEWALK	--	±	REPLACE
SAS-11	SUNSET ST. CONCRETE CURB	--	±	REPLACE
SAS-12	YARD DRAIN	--	±	EXPOSE PIPE TO PROPOSED CURB/RT

CONTRACTOR ADJUSTMENTS

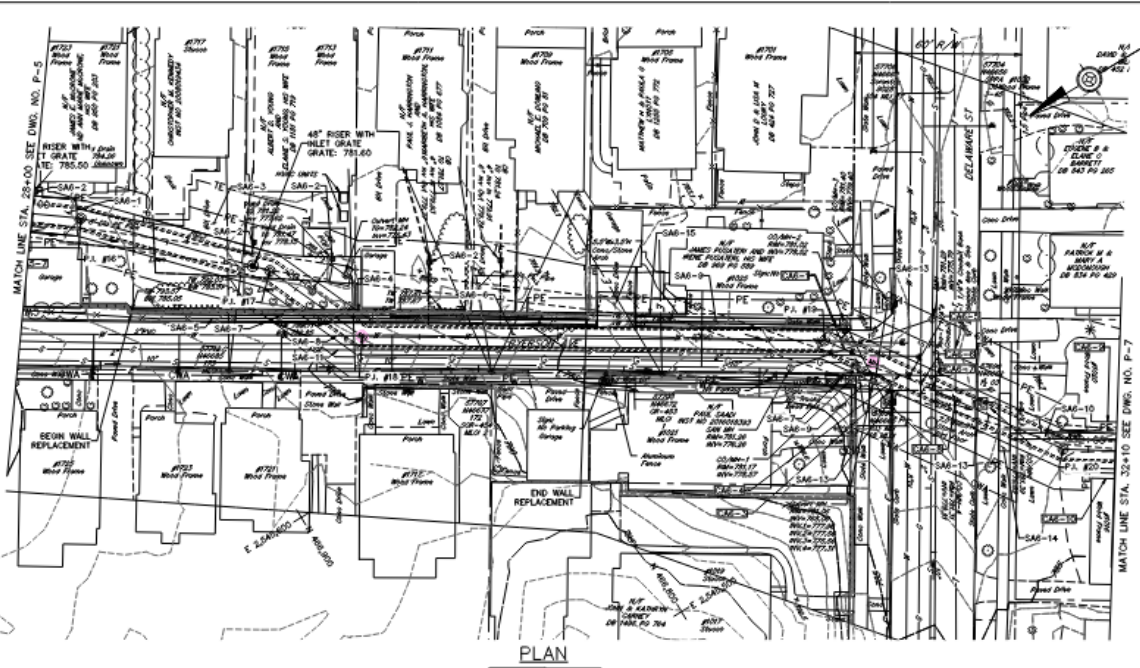
NO.	DESCRIPTION	LOCATION		ADJUSTMENT REQUIRED
		± STATION	OFFSET	
CAS-1	2" GAS LINE	26+15	±	PROTECT AND SUPPORT
CAS-2	COMMUNICATION LINES	26+22	±	PROTECT
CAS-3	COMMUNICATION LINES	26+30	±	PROTECT
CAS-4	#1729 WYOMING AVENUE	27+00	LT.	UNDERPIN OR SUPPORT AS NECESSARY TO ENSURE STRUCTURAL INTEGRITY
CAS-5	#1733 WYOMING AVENUE	27+00	RT.	UNDERPIN OR SUPPORT AS NECESSARY TO ENSURE STRUCTURAL INTEGRITY
CAS-6	UTILITY POLE	27+38	RT.	PROTECT AND SUPPORT
CAS-7	CONCRETE/STONE BOX CULVERT	25+67 TO 26+06	RT.	REMOVE AND BACKFILL
CAS-8	CONCRETE/STONE BOX CULVERT	26+06 TO 27+18	VARIES	REMOVE
CAS-9	CONCRETE/METAL BOX CULVERT	27+18 TO 29+00	VARIES	REMOVE

SPONSOR ADJUSTMENTS—BY OTHERS

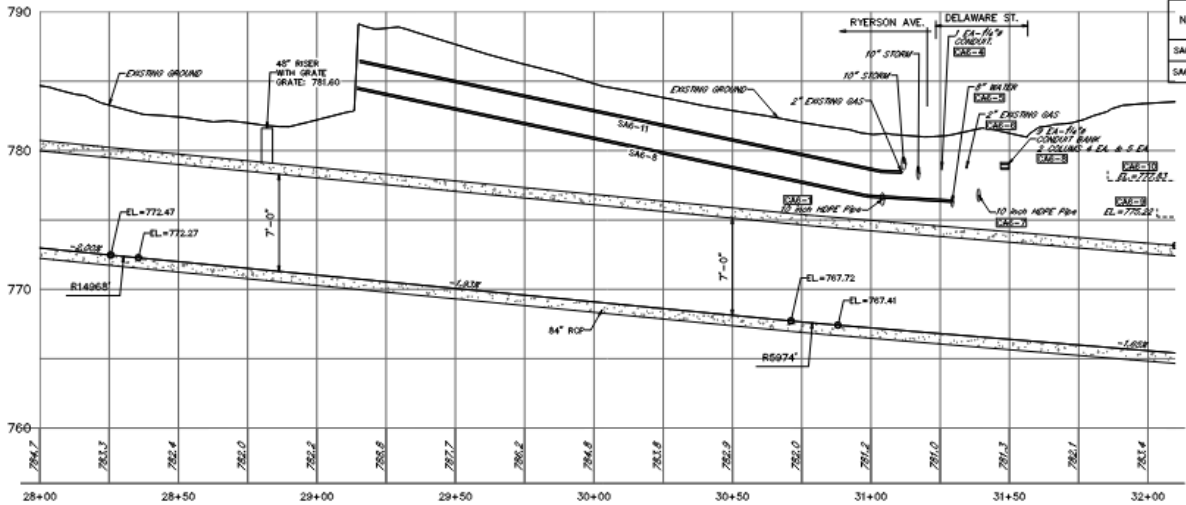
NO.	DESCRIPTION	LOCATION		ADJUSTMENT REQUIRED
		± STATION	OFFSET	
SAS-2	6" SANITARY LINE	25+99	±	RELOCATE
SAS-4	6" WATER LINE	26+10	±	RELOCATE

DESCRIPTION	DESCRIPTION
AS BUILT REVISIONS	
DATE:	PROFESSIONAL - REILLY ASSOCIATES
APPROVED:	
DIRECTOR - BUREAU OF WATERWAYS ENGINEERING AND WELFARE - DEP.	
Professional's Signature Date	
REILLY ASSOCIATES CONSULTING ENGINEERS 49 SOUTH MAIN STREET, SUITE 200 PITTSBURGH, PENNSYLVANIA 15260	
COMMONWEALTH OF PENNSYLVANIA DEPARTMENT OF GENERAL SERVICES HARRISBURG, PENNSYLVANIA	
PROJECT NO. DGS 0184-0022 PHASE 3	
MEADOW BROOK FLOOD CONTROL CITY OF SCRANTON LACKAWANNA COUNTY, PENNSYLVANIA	
PLAN AND PROFILE	
STA. 25+80 TO STA. 28+00	
DRAWN BY: CM CHECKED BY: MAM	DATE: 05/31/24 SCALE: AS SHOWN

ALL DIMENSIONS AND EXISTING CONDITIONS SHALL BE CHECKED AND VERIFIED BY CONTRACTOR AT THE SITE.



SCALE: 0 20 40 FEET



PROFILE
HORIZONTAL: 0 20 40 FEET
VERTICAL: 0 4 8 FEET

CURVE DATA

CURVE NO.	P.I. COORDINATES		Δ	D	R	T	L	P.C. STATION	P.T. STATION
	NORTH	EAST							
P.I. #16	466,912.4	2,545,733.4	10°-00'-00"						
P.I. #17	466,863.7	2,545,682.0	20°-00'-00"						
P.I. #18	466,847.4	2,545,644.4	30°-00'-00"						
P.I. #19	466,795.2	2,545,597.0	24°-00'-00"						
P.I. #20	466,651.7	2,545,479.0	22°-30'-00"						

SPONSOR ADJUSTMENTS

NO.	DESCRIPTION	LOCATION		ADJUSTMENT REQUIRED
		STATION	OFFSET	
SAB-1	CONCRETE DRIVE	28+00 TO 28+17	LT./RT.	REPLACE
SAB-2	YARD DRAINS	28+01 TO 29+53	LT.	EXTEND PIPES TO PROPOSED CULVERT
SAB-3	PAVED DRIVE	28+56 TO 29+26	LT./RT.	REPLACE
SAB-4	RETAINING WALL	28+40 TO 30+12	LT./RT.	REPLACE
SAB-5	FENCE	28+40 TO 30+12	LT./RT.	REMOVE AND REPLACE
SAB-6	RYERSON AVE. PAVING	28+75 TO 31+24	LT./RT.	REPLACE
SAB-7	RYERSON AVE. CURBS	28+75 TO 31+24	LT./RT.	REPLACE
SAB-9	RYERSON AVE. SIDEWALK	28+75 TO 31+24	LT./RT.	REPLACE
SAB-10	CONCRETE SIDEWALK	31+71 TO 32+10	LT./RT.	REPLACE
SAB-12	DELAWARE ST. PAVING	31+24 TO 31+73	LT./RT.	REPLACE
SAB-13	DELAWARE ST. CURBS	31+24 TO 31+73	LT./RT.	REPLACE
SAB-14	DELAWARE ST. SIDEWALK	31+24 TO 31+73	LT./RT.	REPLACE
SAB-15	FENCE	30+28 TO 30+46	LT.	REMOVE AND REPLACE

CONTRACTOR ADJUSTMENTS

NO.	DESCRIPTION	LOCATION		ADJUSTMENT REQUIRED
		STATION	OFFSET	
CAB-1	10" SANITARY LINE	31+04	€	REMOVE AND REPLACE, BYPASS PUMP
CAB-2	DELETED			
CAB-3	UTILITY POLE	31+25	RT.	PROTECT AND SUPPORT
CAB-4	COMMUNICATION LINES	31+25	€	PROTECT AND SUPPORT
CAB-5	2" WATER LINE	31+29	€	PROTECT AND SUPPORT
CAB-6	2" GAS LINE	31+34	€	PROTECT AND SUPPORT
CAB-7	10" SANITARY LINE	31+39	€	REMOVE AND REPLACE, BYPASS PUMP
CAB-8	COMMUNICATION LINES	31+48	€	PROTECT AND SUPPORT
CAB-9	#1020 DELAWARE STREET	32+05	LT.	UNDERPIN OR SUPPORT AS NECESSARY TO ENSURE STRUCTURAL INTEGRITY
CAB-10	#1016 DELAWARE STREET	32+05	RT.	UNDERPIN OR SUPPORT AS NECESSARY TO ENSURE STRUCTURAL INTEGRITY

SPONSOR ADJUSTMENTS-RY OTHERS

NO.	DESCRIPTION	LOCATION		ADJUSTMENT REQUIRED
		STATION	OFFSET	
SAB-8	2" WATER LINE	29+12 TO 31+12	€	RELOCATE
SAB-11	2" GAS LINE	29+25 TO 31+30	€	RELOCATE

AS BUILT REVISIONS

APPROVED: _____

DESIGNER: BUREAU OF WATERWAYS ENGINEERING AND MATERIALS - BEP

Professional's Signature: _____ Date: _____

REILLY ASSOCIATES
CONSULTING ENGINEERS
49 SOUTH MAIN STREET, SUITE 200
PITTSBURGH, PENNSYLVANIA 15260

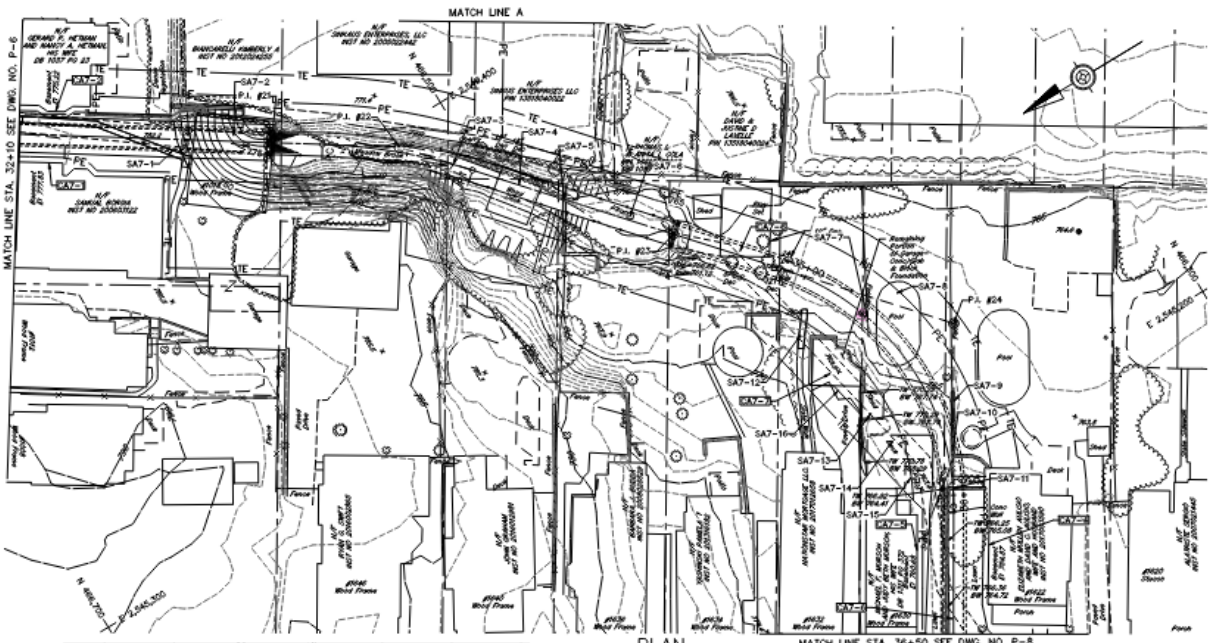
COMMONWEALTH OF PENNSYLVANIA
DEPARTMENT OF GENERAL SERVICES
HARRISBURG, PENNSYLVANIA

PROJECT NO. DGS 0184-0022 PHASE 3

MEADOW BROOK
FLOOD CONTROL
CITY OF SCRANTON
LACKAWANNA COUNTY, PENNSYLVANIA

PLAN AND PROFILE
STA. 28+00 TO STA. 32+10

DRAWN BY: CM DATE: 05/31/24
CHECKED BY: MAM SCALE: AS SHOWN

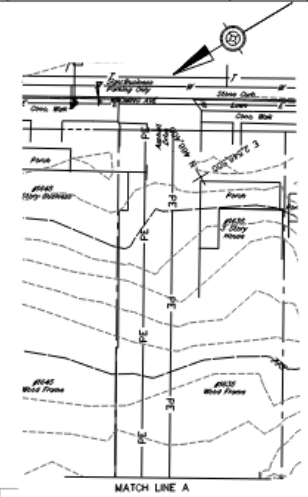
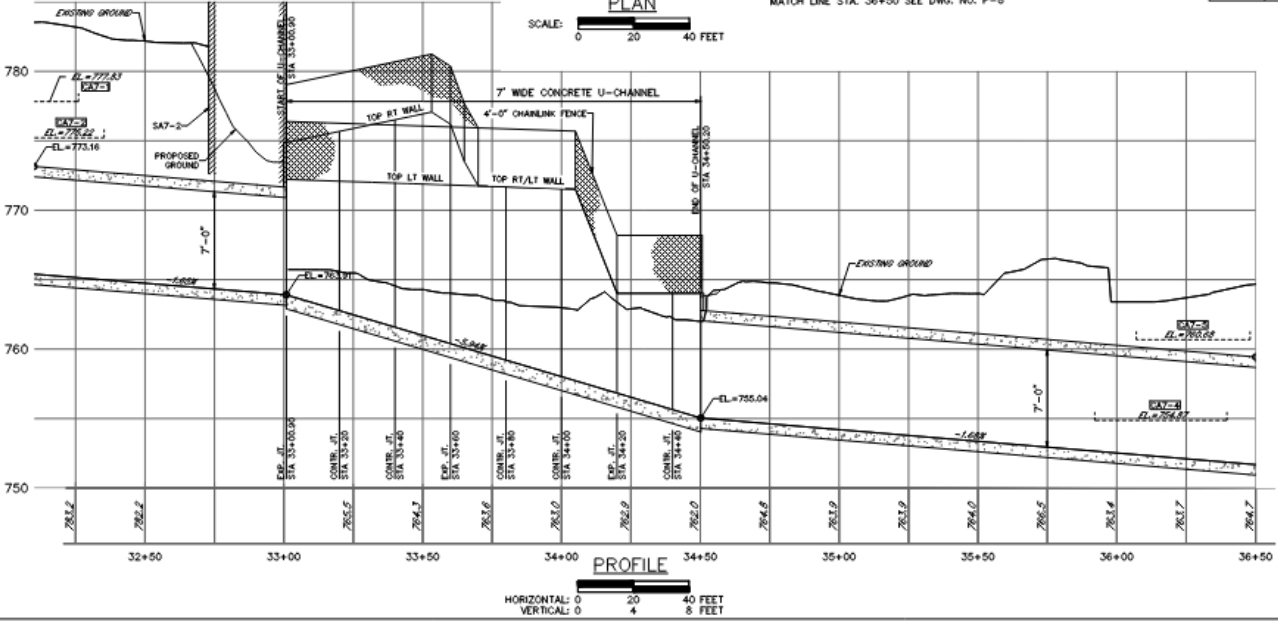


CURVE DATA		Δ	D	R	T	L	P.C. STATION	P.T. STATION
P.I. #21	406,559.6 2,545,419.0							
P.I. #22	406,520.9 2,545,394.0	15°-45'-07"	28°-06'-50"	200.00'	27.87'	54.88'	33+19.30	33+74.28
P.I. #23	406,452.6 2,545,316.1							
P.I. #24	406,382.7 2,545,236.4	72°-24'-00"	67°-48'-50"	90.00'	65.87'	113.73'	34+90.35	36+04.07

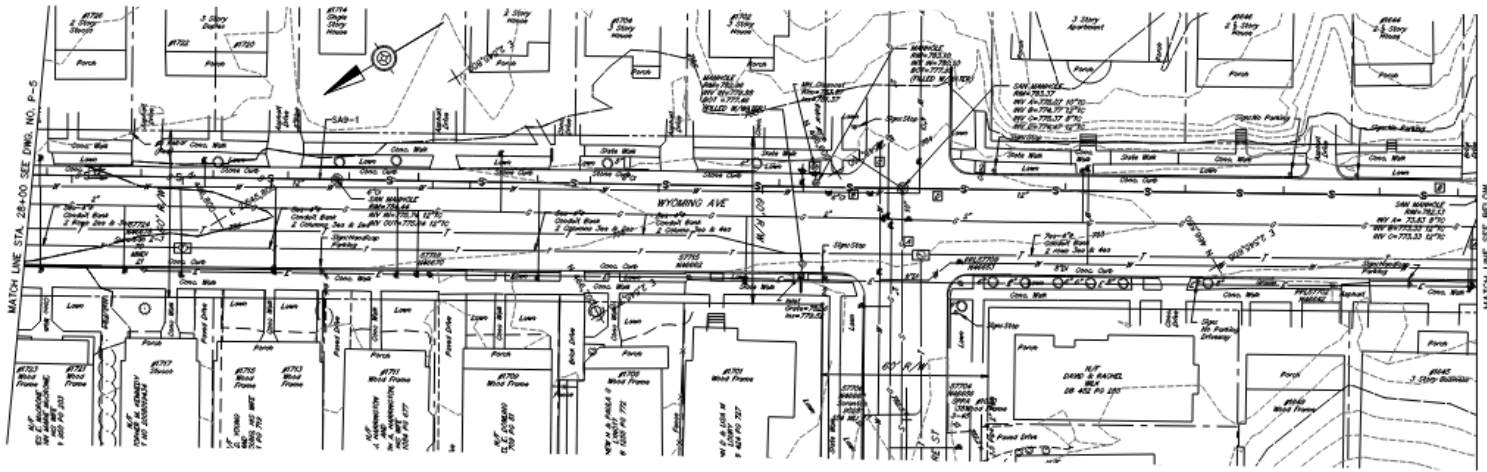
SPONSOR ADJUSTMENTS				
NO.	DESCRIPTION	LOCATION		ADJUSTMENT REQUIRED
		± STATION	OFFSET	
SA7-1	CONCRETE AND SLATE SIDEWALK	32+10 TO 32+72	LT./RT.	REPLACE
SA7-2	RESIDENCE	32+87	±	DEMOLISH
SA7-3	FENCE	33+67 TO 34+12	LT./RT.	REMOVE
SA7-4	WOOD DECK	33+92	LT./RT.	REMOVE
SA7-5	RETAINING WALL	34+09	±	REMOVE
SA7-6	PILLAR	34+33	LT.	REMOVE
SA7-7	FENCE	35+27	±	REMOVE AND REPLACE *
SA7-8	POOL	35+40	LT./RT.	RELOCATE OUT OF FE
SA7-9	RETAINING WALL	35+69 TO 35+87	LT.	REPLACE
SA7-10	FENCE	35+60 TO 35+94	LT.	REMOVE AND REPLACE
SA7-11	RETAINING WALL	35+98 TO 36+20	RT.	REPLACE
SA7-12	SIDEWALK	35+04 TO 35+14	RT.	REPLACE
SA7-13	SHED	35+58	RT.	REMOVE AND REPLACE
SA7-14	DECK	35+70 TO 35+84	RT.	REPLACE
SA7-15	PATIO	35+74 TO 36+20	RT.	REPLACE
SA7-16	PAVED DRIVE	35+14 TO 35+55	RT.	REPLACE

* PROVIDE PERSONNEL ACCESS GATE AT CENTERLINE OF CHANNEL

CONTRACTOR ADJUSTMENTS				
NO.	DESCRIPTION	LOCATION		ADJUSTMENT REQUIRED
		± STATION	OFFSET	
CA7-1	#1020 DELAWARE STREET	32+20	RT.	UNDERPIN OR SUPPORT AS NECESSARY TO ENSURE STRUCTURAL INTEGRITY
CA7-2	#1016 DELAWARE STREET	32+23	LT.	UNDERPIN OR SUPPORT AS NECESSARY TO ENSURE STRUCTURAL INTEGRITY
CA7-3	DELETED			
CA7-4	#1622 PENN AVENUE	36+22	LT.	UNDERPIN OR SUPPORT AS NECESSARY TO ENSURE STRUCTURAL INTEGRITY
CA7-5	#1630 PENN AVENUE	36+22	RT.	UNDERPIN OR SUPPORT AS NECESSARY TO ENSURE STRUCTURAL INTEGRITY
CA7-6	CONCRETE ARCH CULVERT			REMOVE
CA7-7	CONCRETE ARCH CULVERT			REMOVE AND BACKFILL

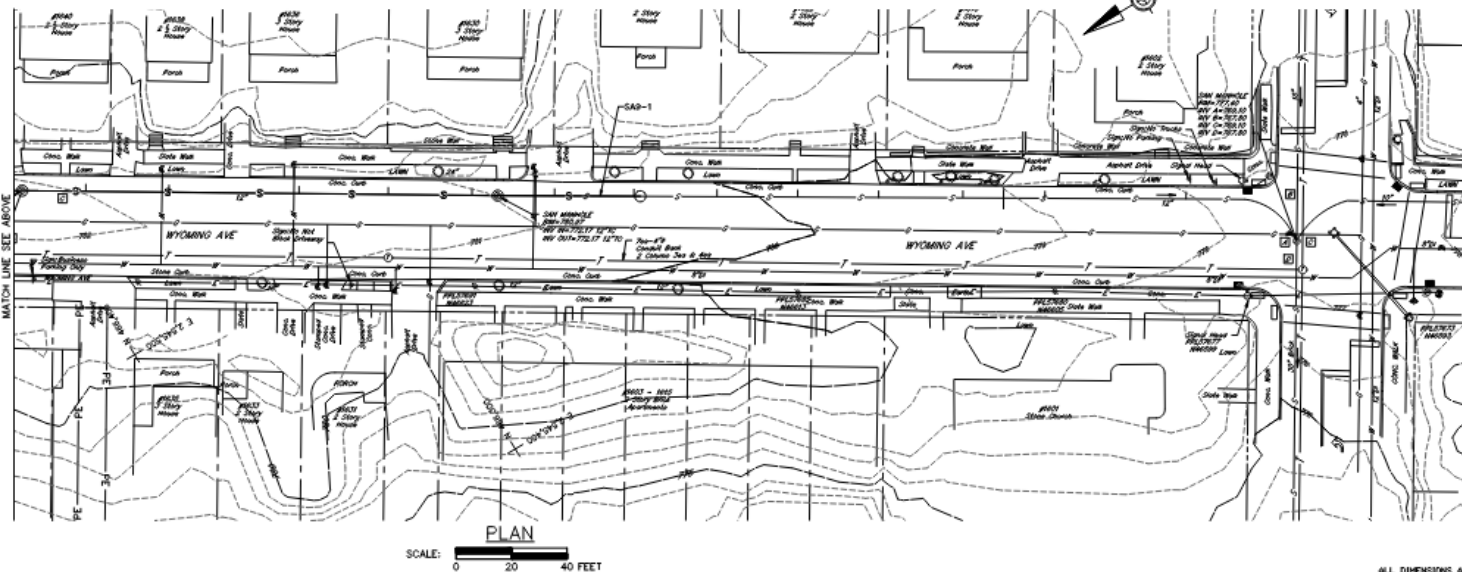


NO.	DESCRIPTION	NO.	DESCRIPTION
AS BUILT REVISIONS			
SUBMITTED: _____			
APPROVED: _____			
CHECKED - BUREAU OF WATERWAYS ENGINEERING AND METEOROLOGY - D.E.P.			
Professional's Signature: _____ Date: _____			
REILLY ASSOCIATES CONSULTING ENGINEERS 49 SOUTH MAIN STREET, SUITE 200 PITTSBURGH, PENNSYLVANIA 15222			
COMMONWEALTH OF PENNSYLVANIA DEPARTMENT OF GENERAL SERVICES HARRISBURG, PENNSYLVANIA			
PROJECT NO. DGS 0184-0022 PHASE 3			
MEADOW BROOK FLOOD CONTROL CITY OF SCRANTON LACKAWANNA COUNTY, PENNSYLVANIA PLAN AND PROFILE STA. 32+10 TO STA. 36+50			
DRAWN BY: CM	DATE: 05/31/24	DRAWN NO.:	
CHECKED BY: MEAM	SCALE: AS SHOWN		



SPONSOR ADJUSTMENTS - BY OTHERS

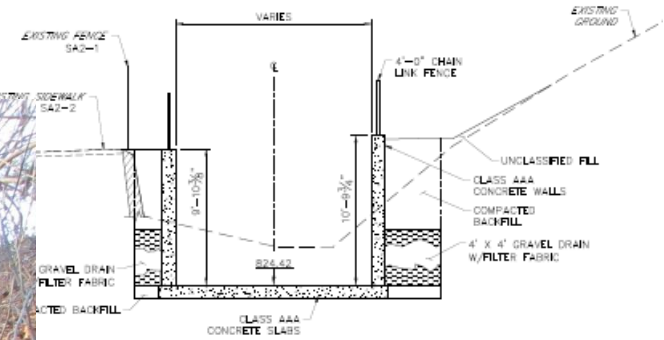
NO.	DESCRIPTION	LOCATION		ADJUSTMENT REQUIRED
		STATION	OFFSET	
SAP-1	12" SANITARY	25+99	LT.	REPLACE



NO.	DESCRIPTION	DATE
AS BUILT REVISIONS		
DESIGNED	PROFESSIONAL - REILLY ASSOCIATES	
APPROVED		
DIRECTOR - BUREAU OF WATERWAYS ENGINEERING AND WELFARE - D.P.P.		
Professional's Signature Date		
REILLY ASSOCIATES CONSULTING ENGINEERS 49 SOUTH MAIN STREET, SUITE 200 PITTSBURGH, PENNSYLVANIA 15222		
COMMONWEALTH OF PENNSYLVANIA DEPARTMENT OF GENERAL SERVICES HARRISBURG, PENNSYLVANIA		
PROJECT NO. DGS 0184-0022 PHASE 3		
MEADOW BROOK FLOOD CONTROL CITY OF SCRANTON LACKAWANNA COUNTY, PENNSYLVANIA		
PLAN SEWER RELOCATION		
DRAWN BY: CM	DATE: 05/31/24	DRAWING NO.:
CHECKED BY: MAM	SCALE: AS SHOWN	P-9

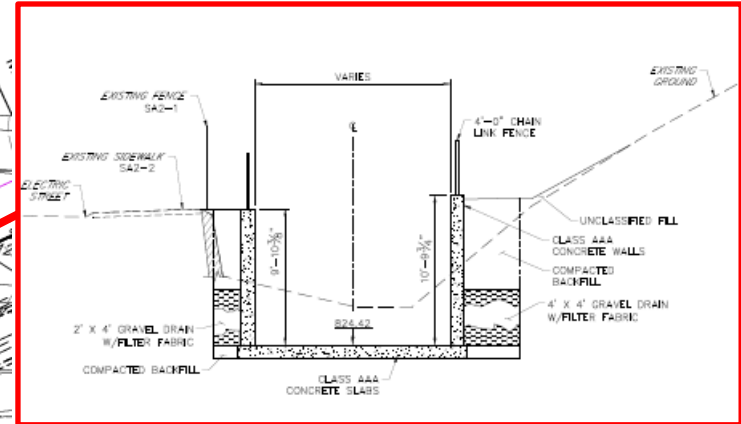
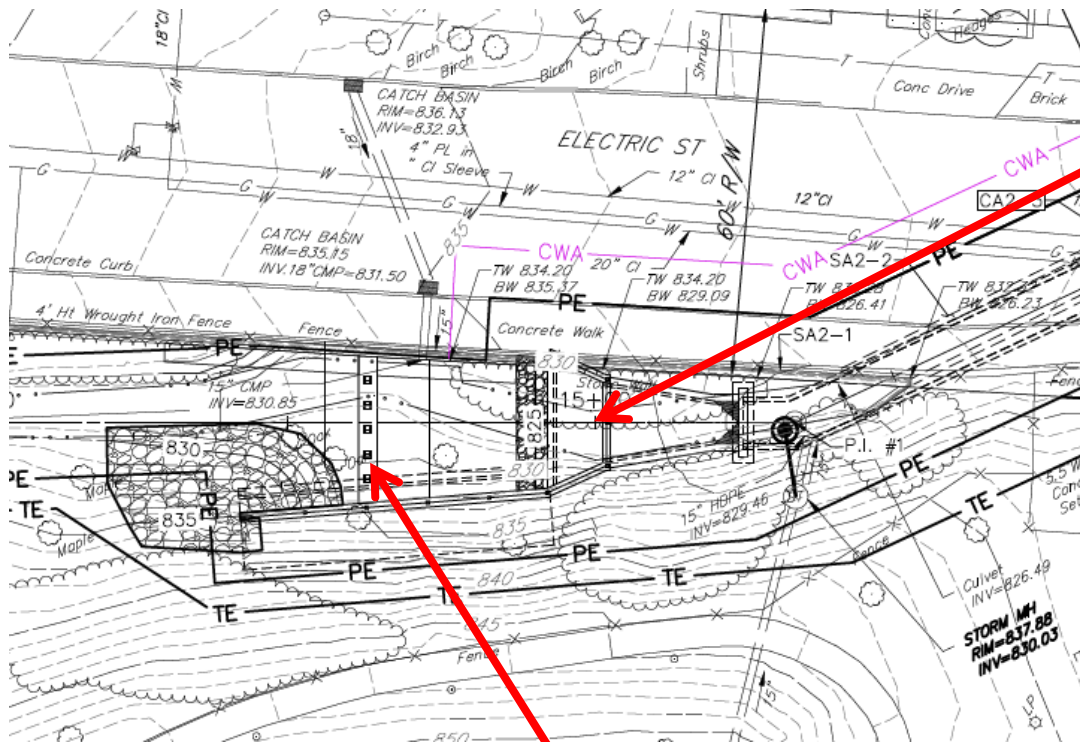
ALL DIMENSIONS AND EXISTING CONDITIONS SHALL BE CHECKED AND VERIFIED BY CONTRACTOR AT THE SITE.

Project Details



Cross Section

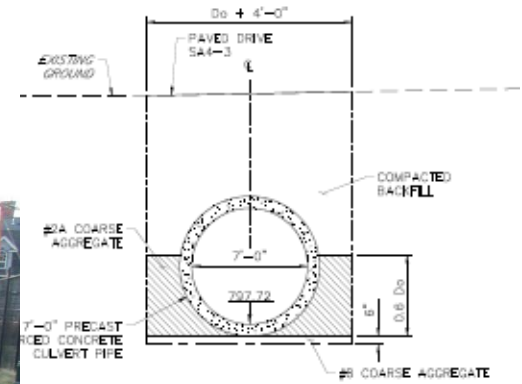
Project Details



Cross Section
15+00

Trash Rack

Project Details

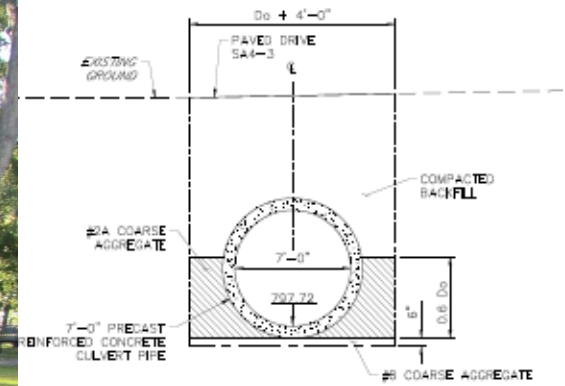


Cross Section



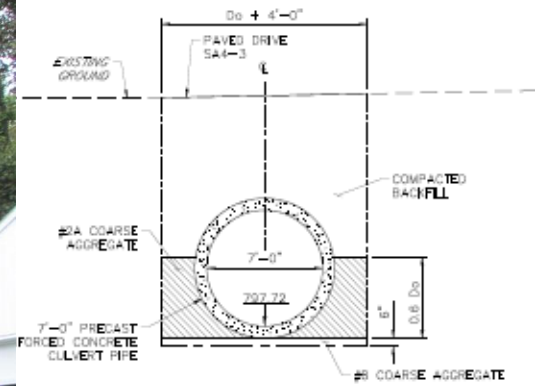
ENGINEERING / ENVIRONMENTAL / SURVEYING

Project Details



Cross Section

Project Details

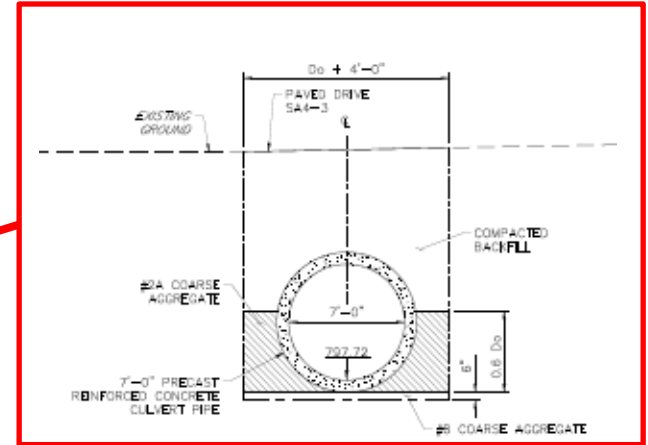
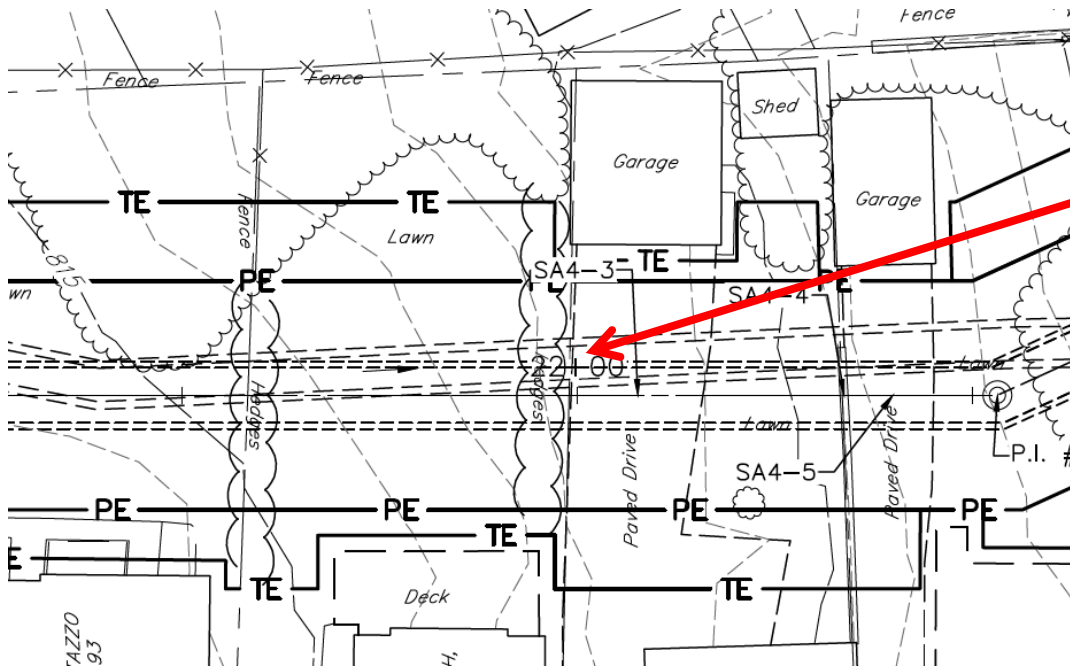


Cross Section



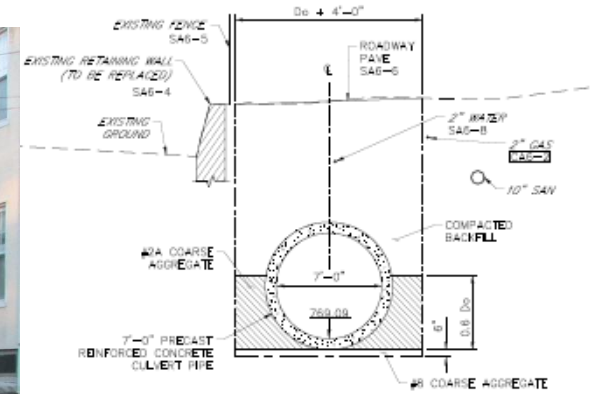
ENGINEERING / ENVIRONMENTAL / SURVEYING

Project Details



Cross Section
22+00

Project Details

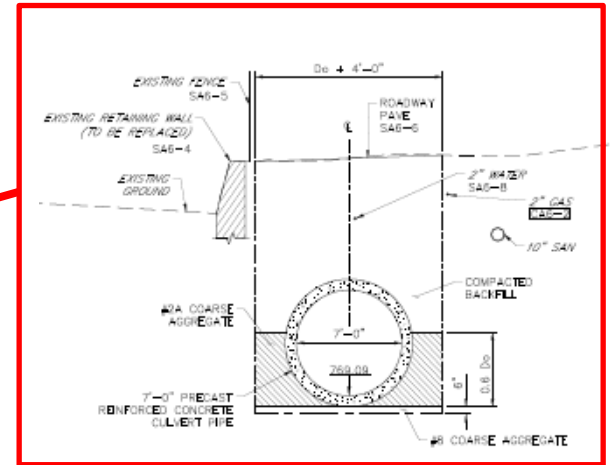
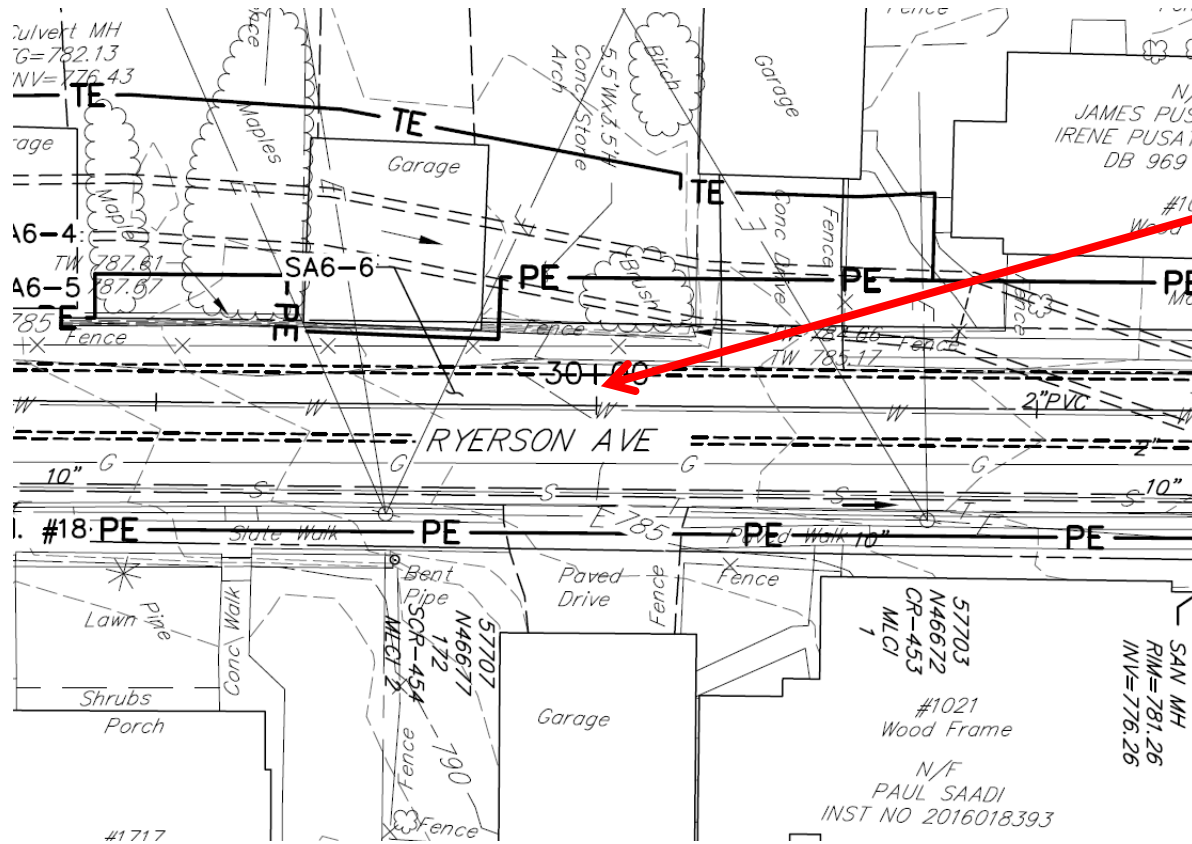


Cross Section



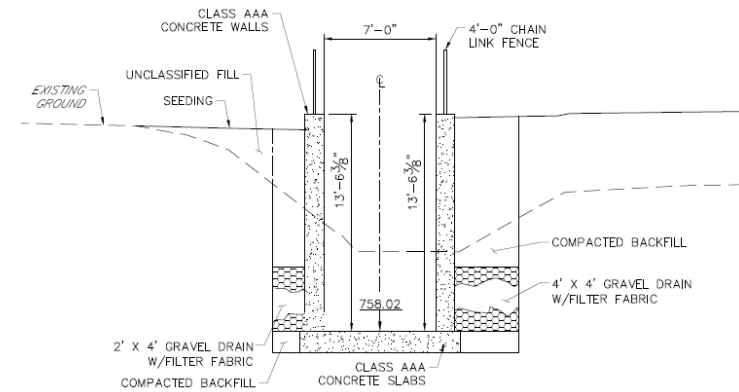
ENGINEERING / ENVIRONMENTAL / SURVEYING

Project Details



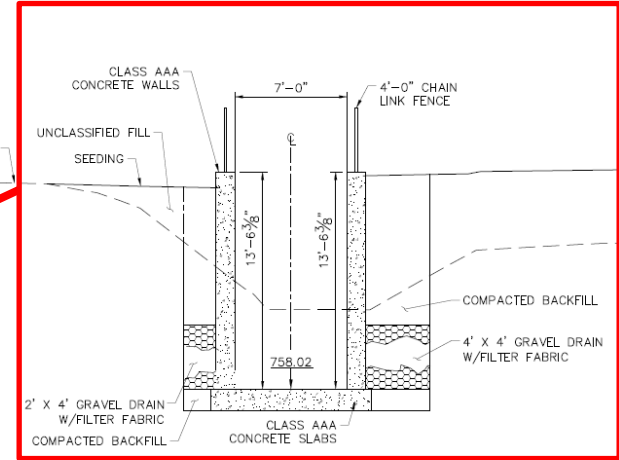
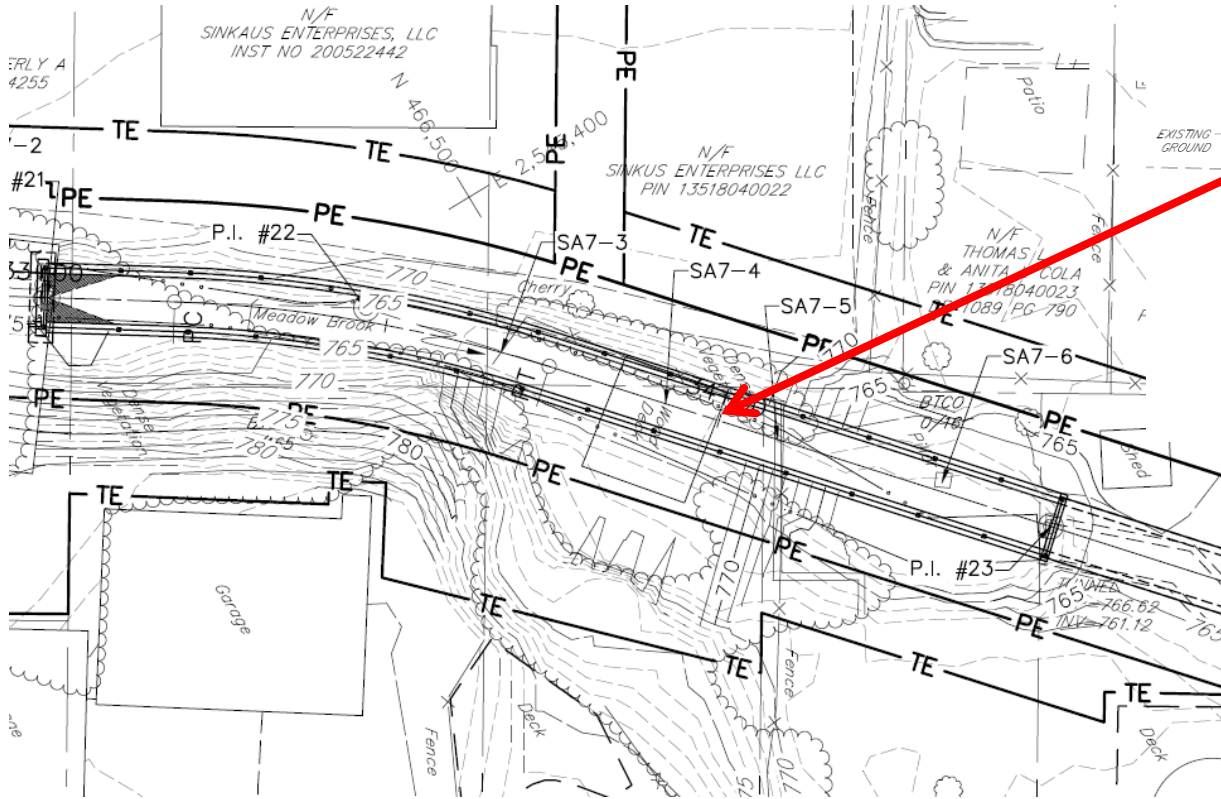
Cross Section
30+00

Project Details



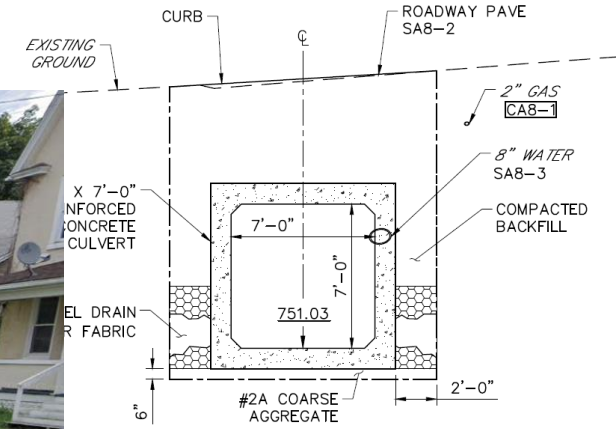
Cross Section

Project Details



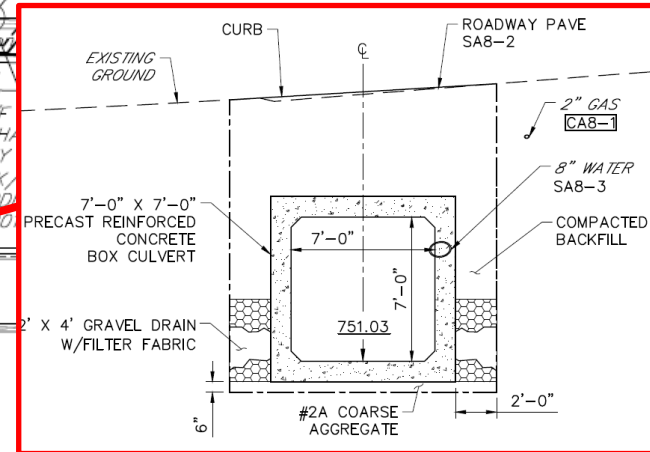
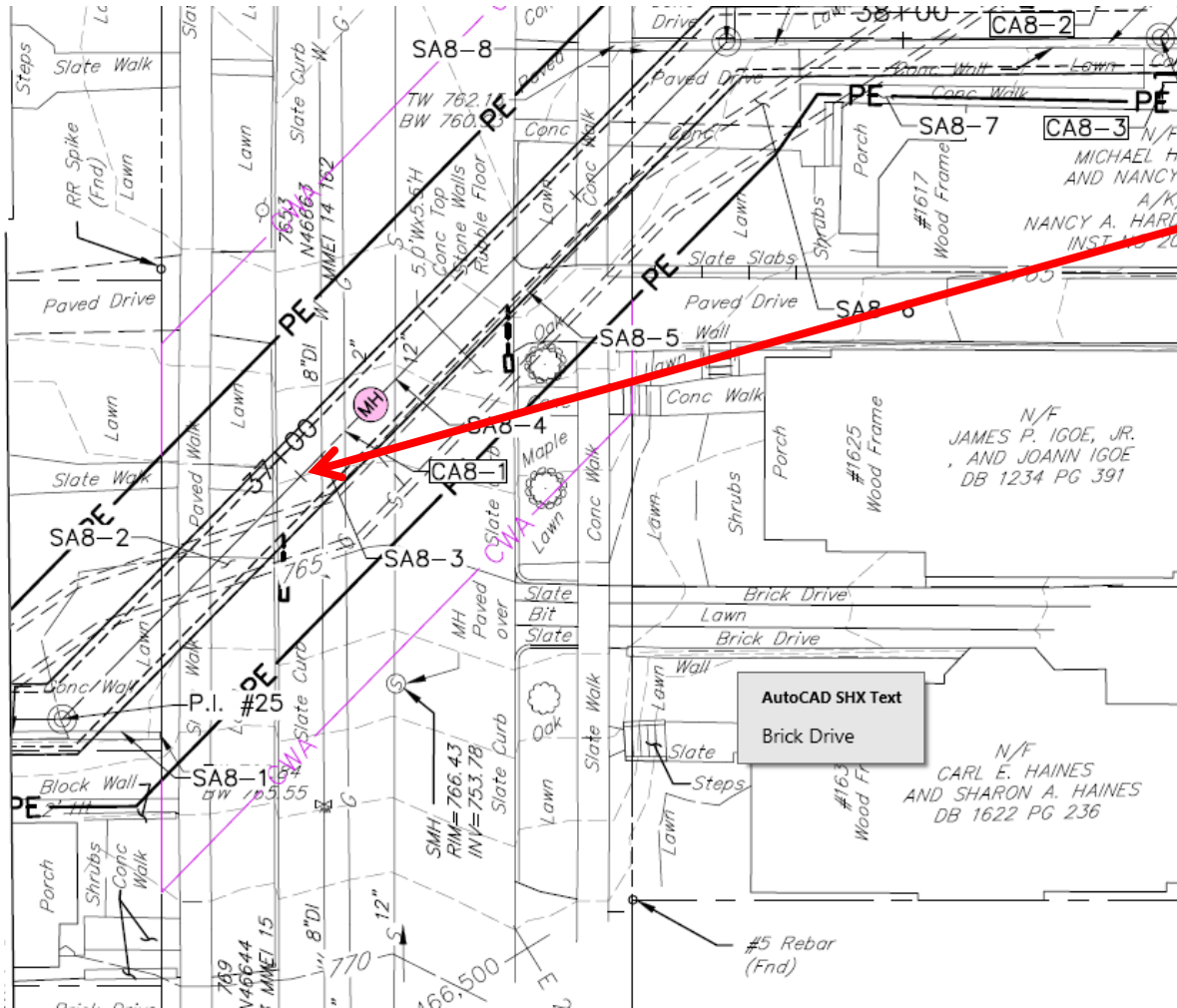
Cross Section
34+00

Project Details



Cross Section

Project Details



Cross Section
37+00



ENGINEERING / ENVIRONMENTAL / SURVEYING

Current Design Status

- **Permits**
 - DEP Water Obstruction Permit –Under Review
 - NPDES Permit Application – Ready for submission
 - PennDOT Temporary Access Highway Occupancy Permit – Approved.

- **Interim Construction Document Phase**
 - Under Review by DGS & DEP
 - Expected Completion July 2024

- **Final Construction Documents**
 - Expected Completion August 2024

- **Right-of-Way Acquisition**
 - Expected Completion March 2025

- **Construction Contract Bid Advertisement**
 - June 2025

- **Project Construction Phase**
 - November 2025 – May 2027

