

Invitation for Public Comment Parker Street Bridge Over Lackawanna River Project

The Pennsylvania Department of Transportation (PennDOT) proposes the replacement of the existing structure that carries two lanes of traffic on Parker Street over the Lackawanna River in the City of Scranton. The project also includes pavement reconstruction on the bridge approaches and resurfacing between the intersections of North Main Avenue and Boulevard Avenue. The western approach roadway passes through the City of Scranton Flood Control Project levee which runs along the western bank of the Lackawanna River. A 3.5 mile vehicular detour is proposed during construction. A temporary pedestrian bridge is proposed downstream from the Parker Street bridge to accommodate pedestrian crossing of the Lackawanna River for the Lackawanna River Heritage Trail. For this project, PennDOT will need to acquire approximately 1,873 square feet of right-of-way from the Lackawanna Valley Conservancy property in the northeast quadrant of the Parker Street bridge to construct the bridge abutment. The Lackawanna Valley Conservancy property qualifies as a Section 4(f) park and recreational resource pursuant to the U.S. Department of Transportation Act of 1966. More information on USDOT Section 4(f) can be found at: www.environment.fhwa.dot.gov/4f/4fpolicy.asp#ident

Questions and comments on the project can be directed to:

Gretchen Yarnall

Lotus Environmental Consulting, LLC

gyarnall@lotusenvironmental.com

(717) 712-5961

LEGEND

	PARCEL IDENTIFICATION NUMBER
	PARCEL IDENTIFICATION NUMBER-NO TAKE
	ROCK PROTECTION
	REQUIRED RIGHT-OF-WAY TAKE
	TEMPORARY CONSTRUCTION EASEMENT

HYDRAULIC DATA:

DRAINAGE AREA - 172 SQ MI

FLOOD DATA:

FREQUENCY (YR)	50*	100**
MAGNITUDE (CFS)	12,100	14,200
W. S. ELEV.	720.37	721.50
CHANNEL VELOCITY (FT/S)	7.76	8.21

FLOOD OF RECORD: N/A

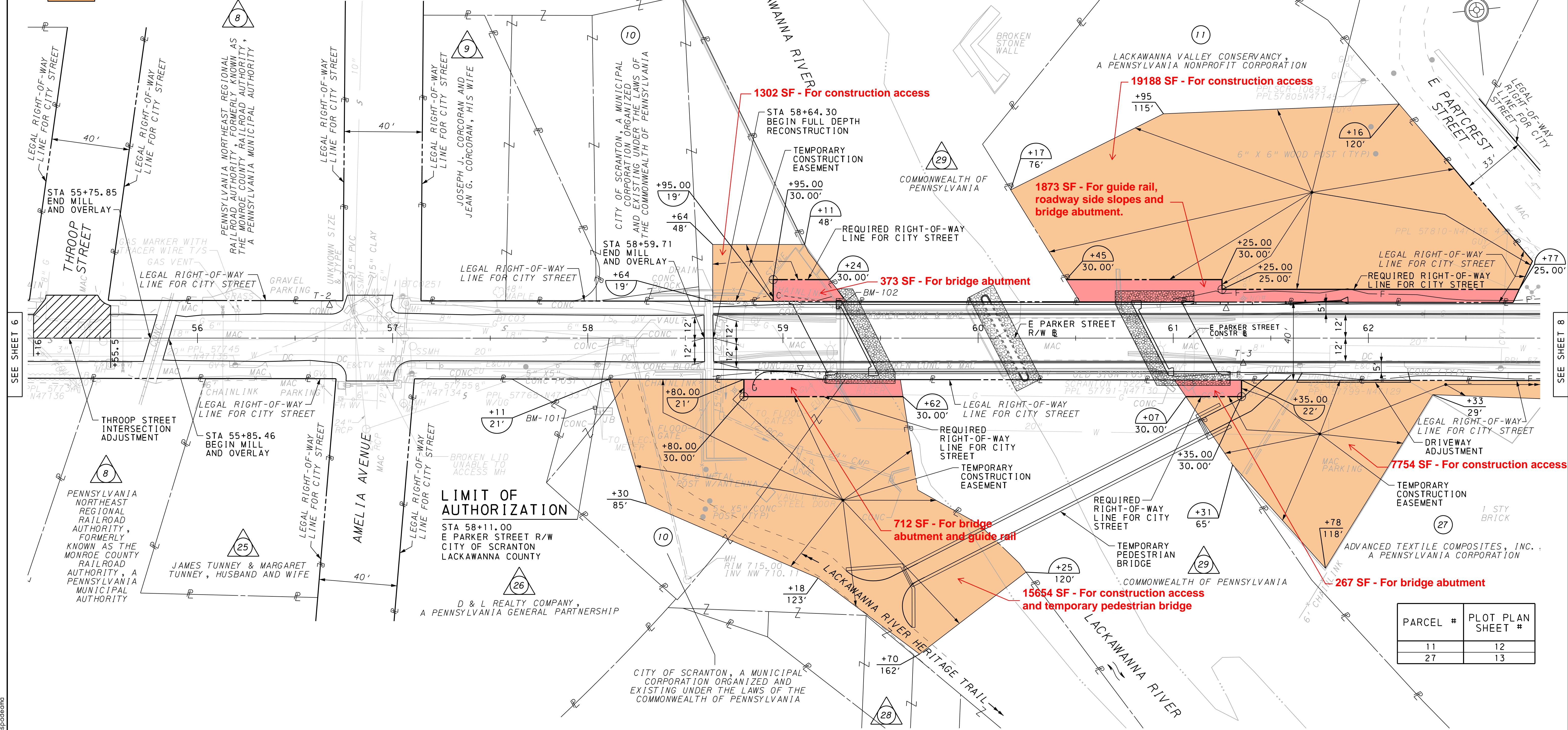
* PENNDOT DESIGN FLOOD

** DEP DESIGN FLOOD

BM-101 ELEV 720.529
E PARKER STREET
STA 58+03.65, OFFSET 35.7' RT
SQ CUT ON CONTROL BOX CONC BASE

BM-102 ELEV 726.950
E PARKER STREET
STA 59+28.33, OFFSET 15.6' LT
CHISELED SQ TOP NORTH END OF PARAPET WALL

DISTRICT	COUNTY	ROUTE	SECTION	SHEET
4-0	LACKAWANNA	E PARKER STREET	R/W	7 OF 13
CITY OF SCRANTON				
REVISION NUMBER	REVISIONS	DATE	BY	APPROVED



LIMIT OF AUTHORIZATION
STA 58+11.00
E PARKER STREET R/W
CITY OF SCRANTON
LACKAWANNA COUNTY



EXISTING STRUCTURE DATA:
STA 60+05.00
TYPE: PS CONCRETE ADJACENT
BOX BEAM BRIDGE
SPAN: = 160'-0"
YEAR BUILT: 1964
SKEW: 63°00'00"
CLEAR ROADWAY WIDTH: 22'-0"
CURB-TO-CURB
BRIDGE OUT-TO-OUT: 31'-8"

PROPOSED STRUCTURE DATA:
STA 60+13.75
TYPE: PS CONCRETE ADJACENT
BOX BEAM BRIDGE
CLEAR SPAN: 150'-00"
MIN UNDERCLEARANCE: 9'-0 1/4"
SKEW: 63°00'00"
CLEAR ROADWAY WIDTH: 24'-0"
CURB-TO-CURB
BRIDGE OUT-TO-OUT: 36'-6"

PRELIMINARY

FOR PROFILE, SEE SHEET 10
SURVEY BOOK NO XXXXX

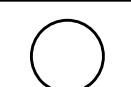



I:\p\projects\14020560_13\90_CAD_Models and Sheets\04-01_Transportation\Right-of-Way\07_row plan 02_Parker St.dgn 4/21/2021 12:29:43 PM

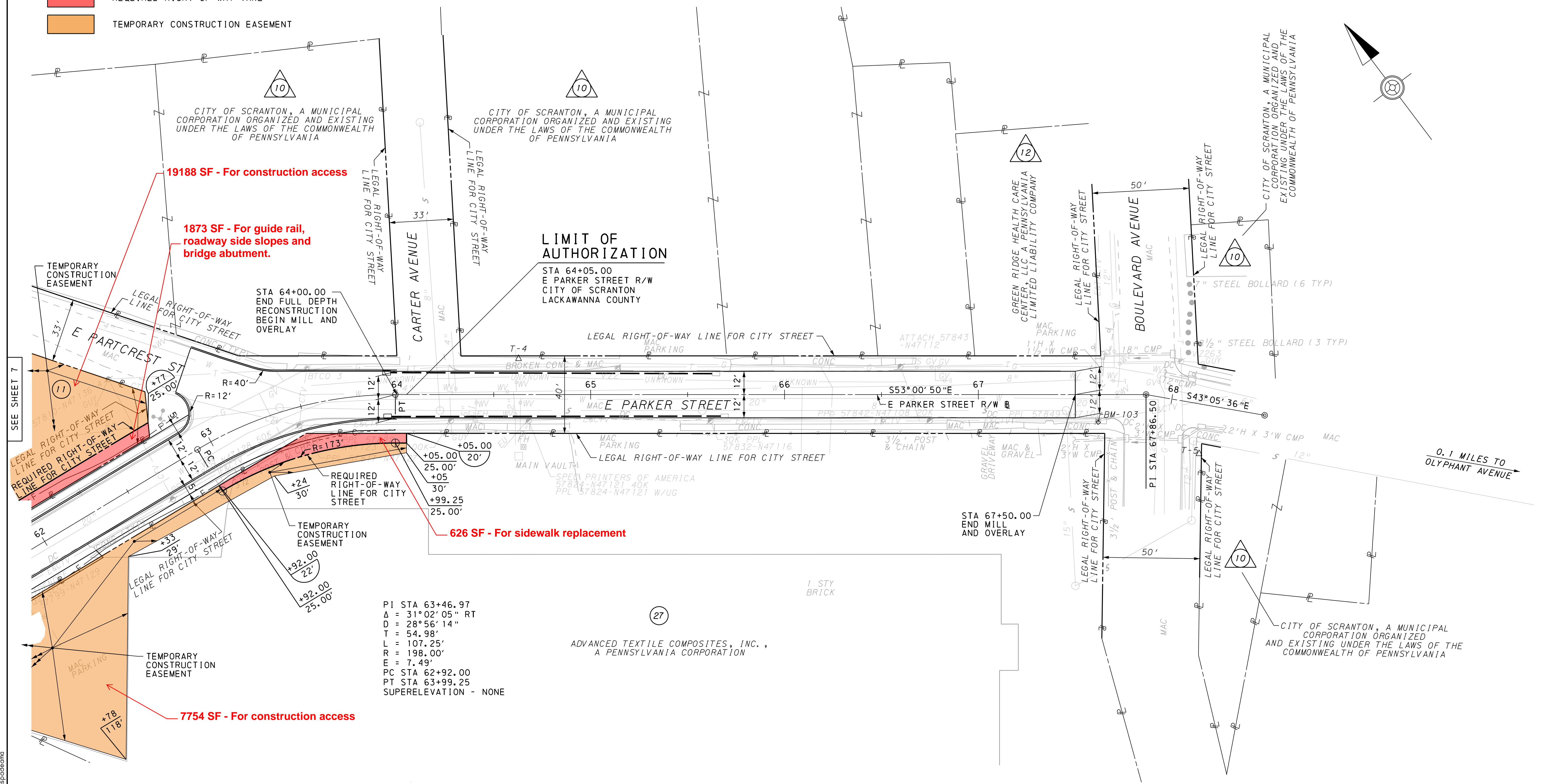
SEE SHEET 6

SEE SHEET 8

BM-103 ELEV 714.460
 E PARKER STREET
 STA 67+61.88, OFFSET 14.3' RT
 RRS IN EP PPL57849-N47103

DISTRICT	COUNTY	ROUTE	SECTION	SHEET
4-0	LACKAWANNA	E PARKER STREET	R/W	8 OF 13
CITY OF SCRANTON				
REVISION NUMBER	REVISIONS	DATE	BY	APPROVED

- LEGEND**
-  PARCEL IDENTIFICATION NUMBER
 -  PARCEL IDENTIFICATION NUMBER-NO TAKE
 -  REQUIRED RIGHT-OF-WAY TAKE
 -  TEMPORARY CONSTRUCTION EASEMENT



PI STA 63+46.97
 $\Delta = 31^{\circ}02'05''$ RT
 $D = 28^{\circ}56'14''$
 $T = 54.98'$
 $L = 107.25'$
 $R = 198.00'$
 $E = 7.49'$
 PC STA 62+92.00
 PT STA 63+99.25
 SUPERELEVATION - NONE

I:\p\proj\scrs\4020560\13\90_CAD_Models and Sheets\04-CT_Transportation\Right-of-Way\08_row plan 03_Parker St.dgn
 4/21/2021 12:23:42 PM sps@scm.com

PARCEL #	PLOT PLAN SHEET #
11	12
27	13

FOR PROFILE, SEE SHEET 11
 SURVEY BOOK NO XXXXX

PRELIMINARY